

Technical Bulletin

Bulletin No: TB 1013

Effective Date: 11/2016

Issued by: Adam Wirkiowski

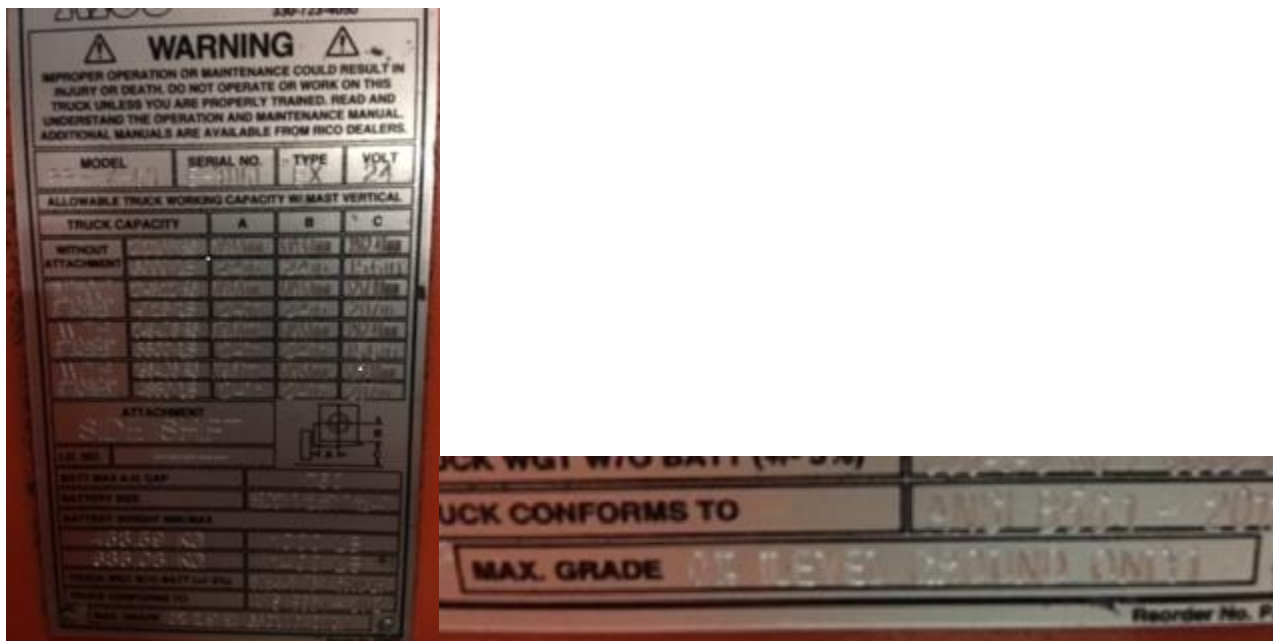
Aftermarket & Product Support Mgr.

Subject: RICO DC POWERED EX TRUCKS – GRADE STATEMENT

Rico EX rated DC trucks are certified and approved for flat level ground only. Through the certification process numerous performance tests are conducted, which includes the Temperature Test. The temperature test is designed to ensure that no part of the truck will generate enough heat to cause an explosion of the surrounding atmosphere.

Operating a truck on **any** grade will significantly increase the amount of torque required by the motor outside of certified limitations. This greatly increases the amount of current the motor will draw and increases the amps drawn, which in turn creates excess heat. Not only will this lead to overtemperature issues with the motors / controllers it could also cause additional damage to other components violating warranty and the vehicle's EX rating. Our EX enclosures are a completely sealed designed with breathers and drains which will not allow a build up of heat to escape.

This information is stated on the data tag which is included on every EX Vehicle RICO manufactures:



MATERIAL HANDLING REDEFINED