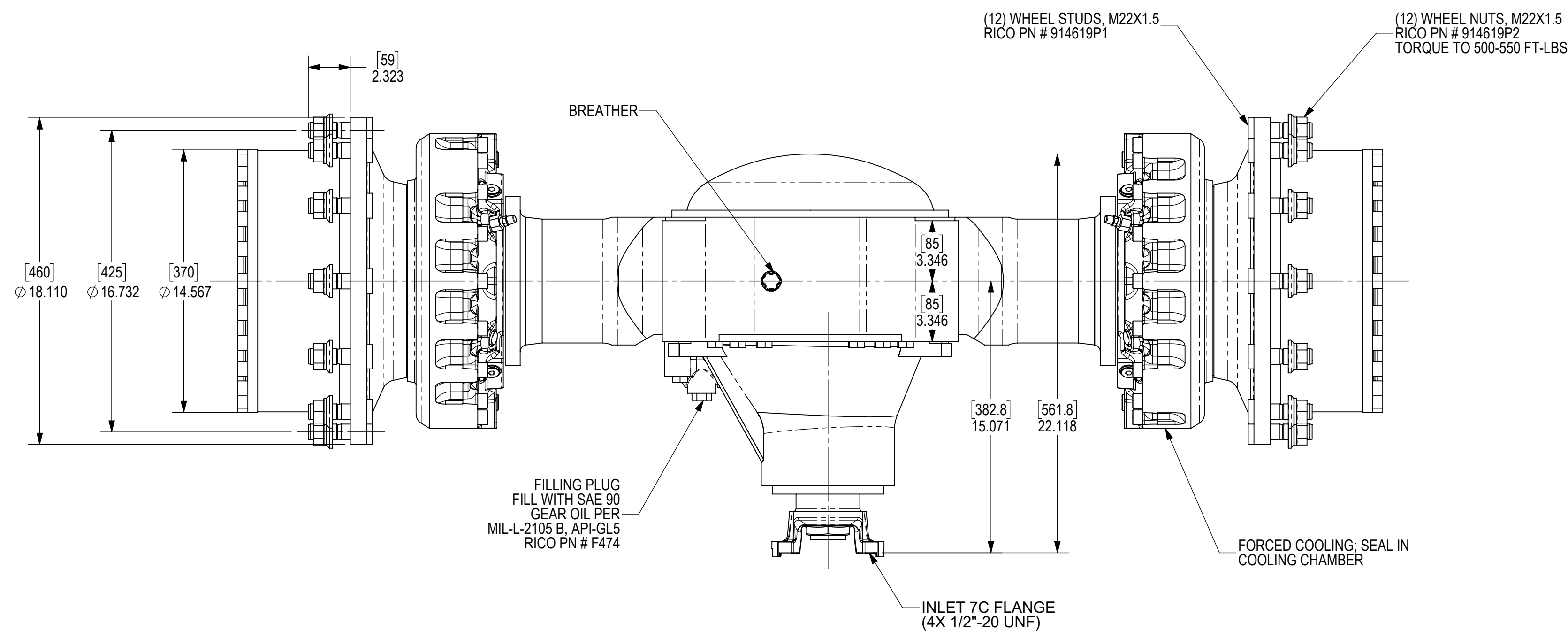
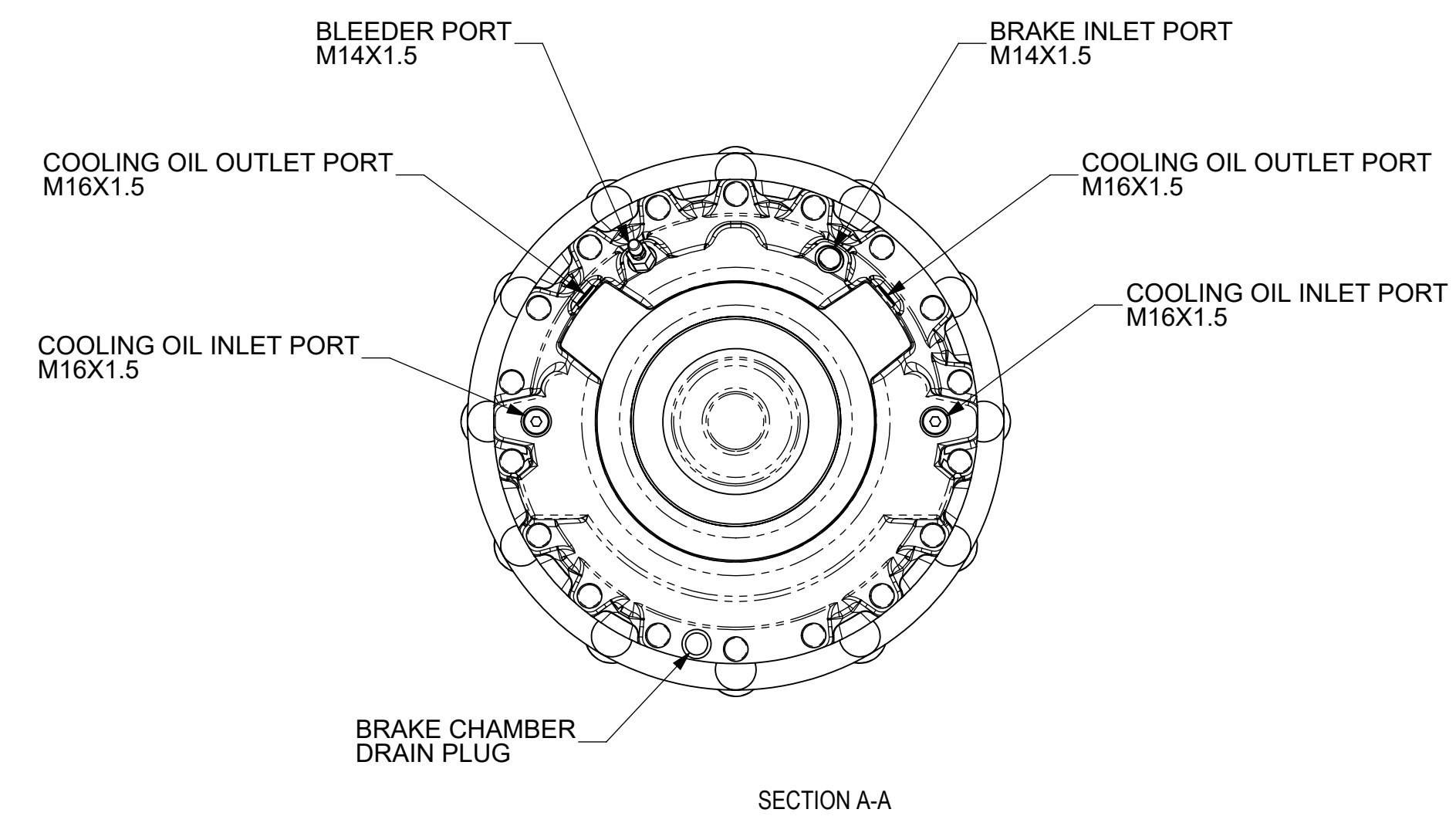
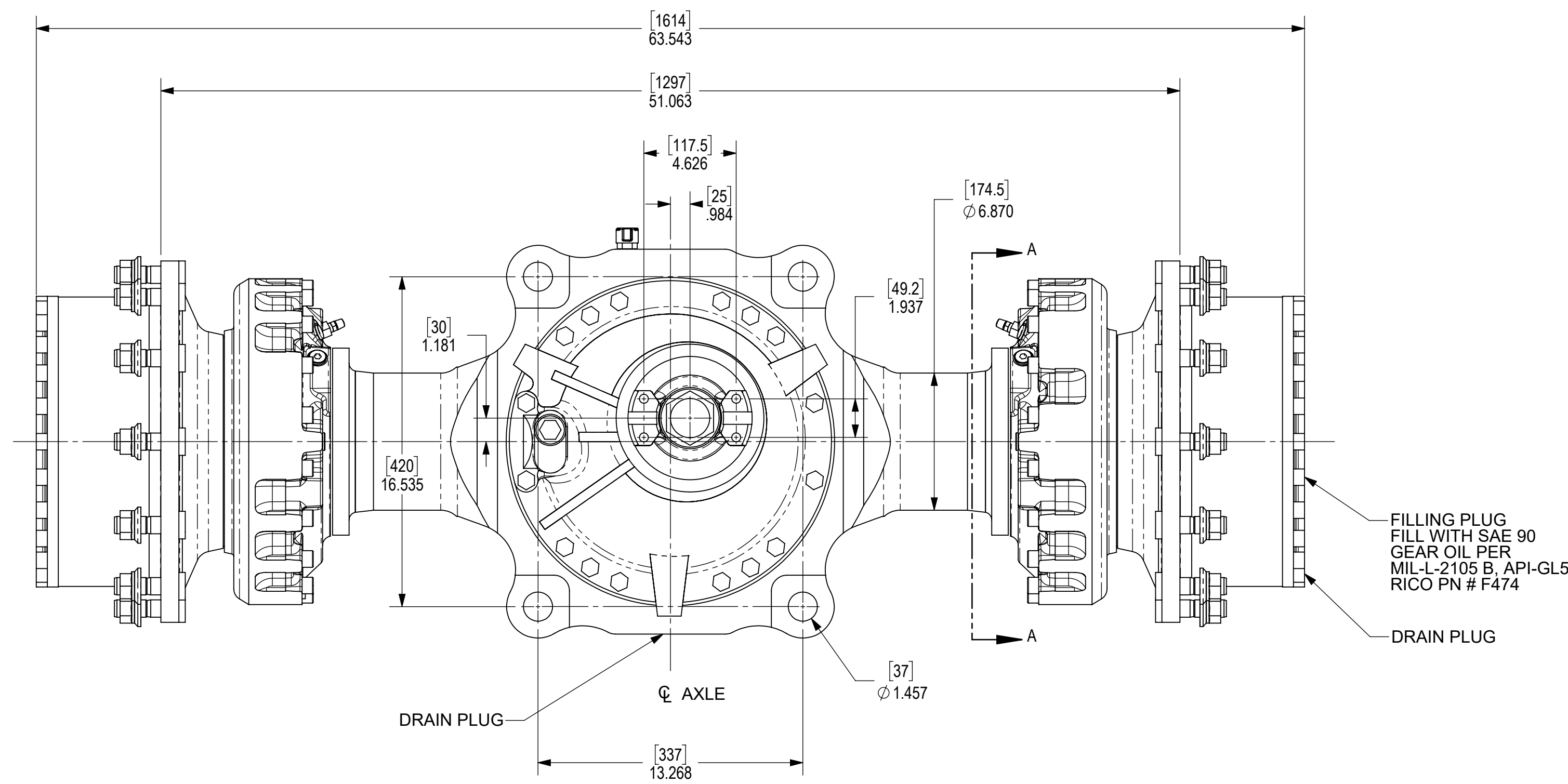


REVISIONS				
ZONE	REV	DESCRIPTION	DATE	APPROVED
A2	A		9/18/2019	



- THESE AXLES USE THE FOLLOWING KESSLER DATA SHEETS:
1. WN63270: DISC BRAKE NLB3340-3
 2. WN85601: NLB PERMISSIBLE OIL
 3. WN85602: NLB PERMISSIBLE OIL
 4. WN17005: USAGE OF AXLES WITH WET BRAKES
 5. WN85603: BRAKE NOISE PREVENTION

IF SUMP BRAKE COOLING IS USED:

1. REMOVE BOTH INLET AND OUTLET COOLING PORT PLUGS AS SHOWN IN SECTION VIEW (ONLY ONE OF EACH), FROM THE LEFT SIDE BRAKE COOLING CHAMBER.
2. ADD ONE QUART OF HYDRAULIC OIL TO THE LEFT SIDE INLET OIL COOLING PORT. THIS NEEDS TO BE GRAVITY FED.
3. AFTER FILLING ONE QUART OF HYDRAULIC OIL TO THE LEFT SIDE INLET OIL COOLING PORT, RE-INSERT THE PLUG REMOVED.
4. RE-INSERT THE LEFT SIDE COOLING OIL OUTLET PLUG.
5. REPEAT ABOVE STEPS FOR THE RIGHT SIDE BRAKE COOLING CHAMBER.
6. WIPE ALL SPILLED OIL FROM THE VEHICLE, AND FLOOR IF REQUIRED.

ALTERNATE PART = 50991028

SUPPLIER SPECIFICATIONS	
SUPPLIER	KESSLER & CO.
SUPPLIER PART NUMBER	82.10622
SUPPLIER PART DESCRIPTION	DRIVE AXLE D81PL489-NLB
MAX AXLE LOAD @ 9 MPH	67,442 LBS (300,000 N)
MAX STATIC AXLE LOAD	112,404 LBS (500,000 N)
MAX BRAKING TORQUE PER HUB	12,907 FT-LBS (17,500 NM)
RATIO	30.75:1

RECEIVING INSPECTION SYMBOLS:
 (XX) INSPECT DISTANCE USING MEASURING INSTRUMENT.
 VISUALLY INSPECT NOTED FEATURE.

UNLESS OTHERWISE SPECIFIED:
 • DIMENSIONS ARE IN INCHES.
 • INTERPRET DIMENSIONS AND TOLERANCES PER ASME Y14.5-2009.
 • UNTOLERANCED DIMENSIONS ARE FOR REFERENCE PURPOSES ONLY.

CONFIDENTIAL AND PROPRIETARY:
 THIS DRAWING SHALL NOT BE DISCLOSED OR DUPLICATED WITHOUT THE EXPRESS WRITTEN CONSENT OF BPR-RICO MANUFACTURING, INC.

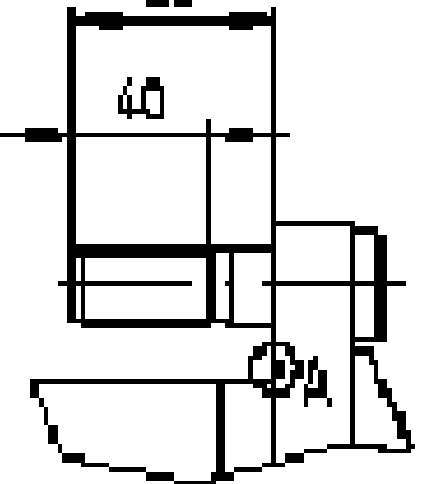


ENGINEER: MARK BRADLEY
 DRAWN BY: MARK BRADLEY
 DATE: 9/16/2020
 THIRD PARTY APPROVAL:

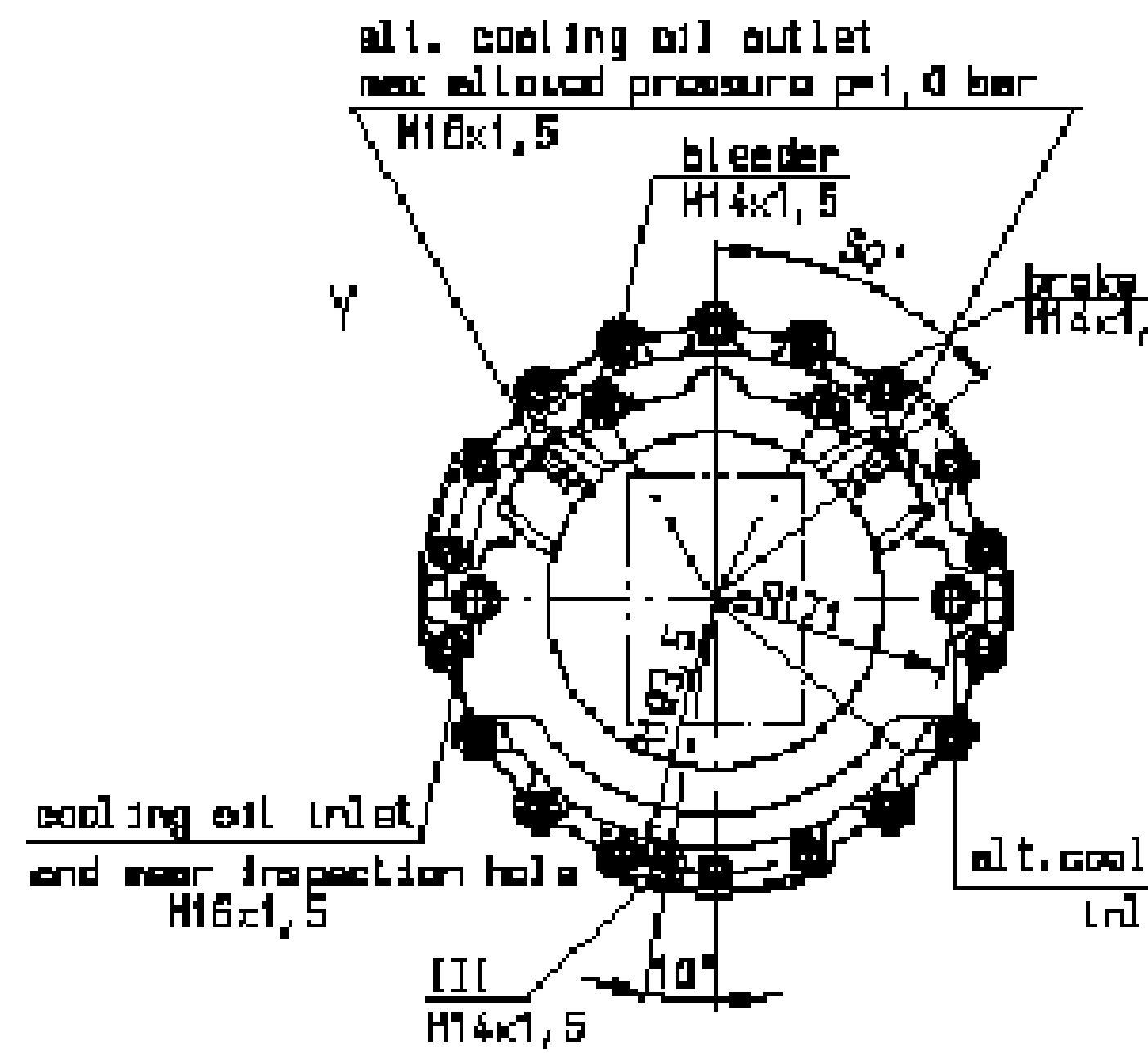
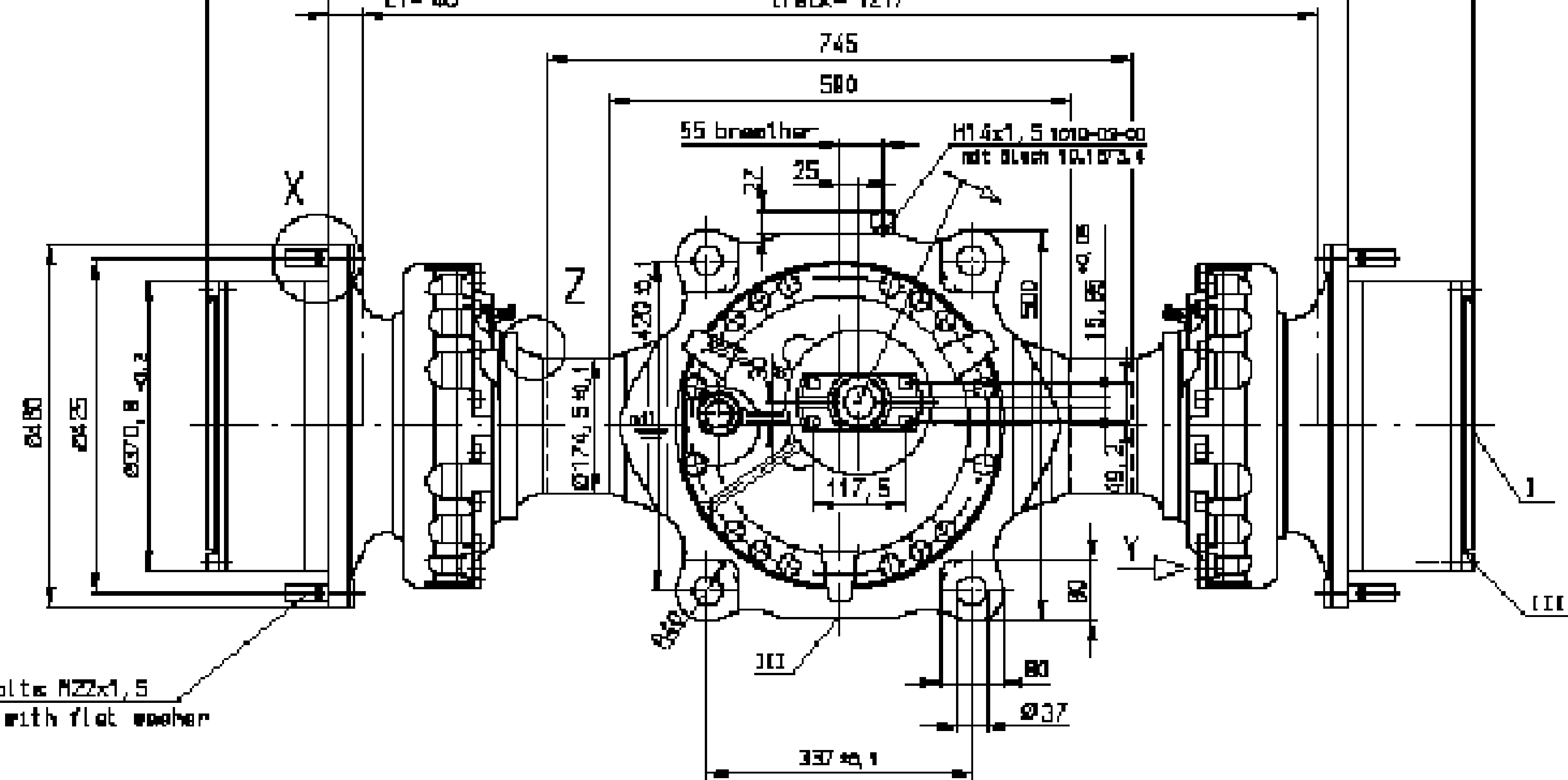
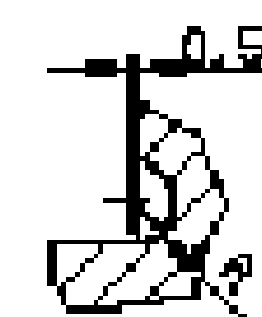
TITLE:	DRIVE AXLE	CAGE:	OZM56
DWG NO:	50991022	SCALE:	D
STATUS:	ACTIVE	UNIT OF MEASURE:	EA
PROCESS:	ASSY	WEIGHT (LB):	1200.0
SOURCE:	PURCHASE	REV:	A
		SHEET:	1 OF 2

THIRD ANGLE PROJECTION

MATL QTY: MATL NO:
 MATL DESC:

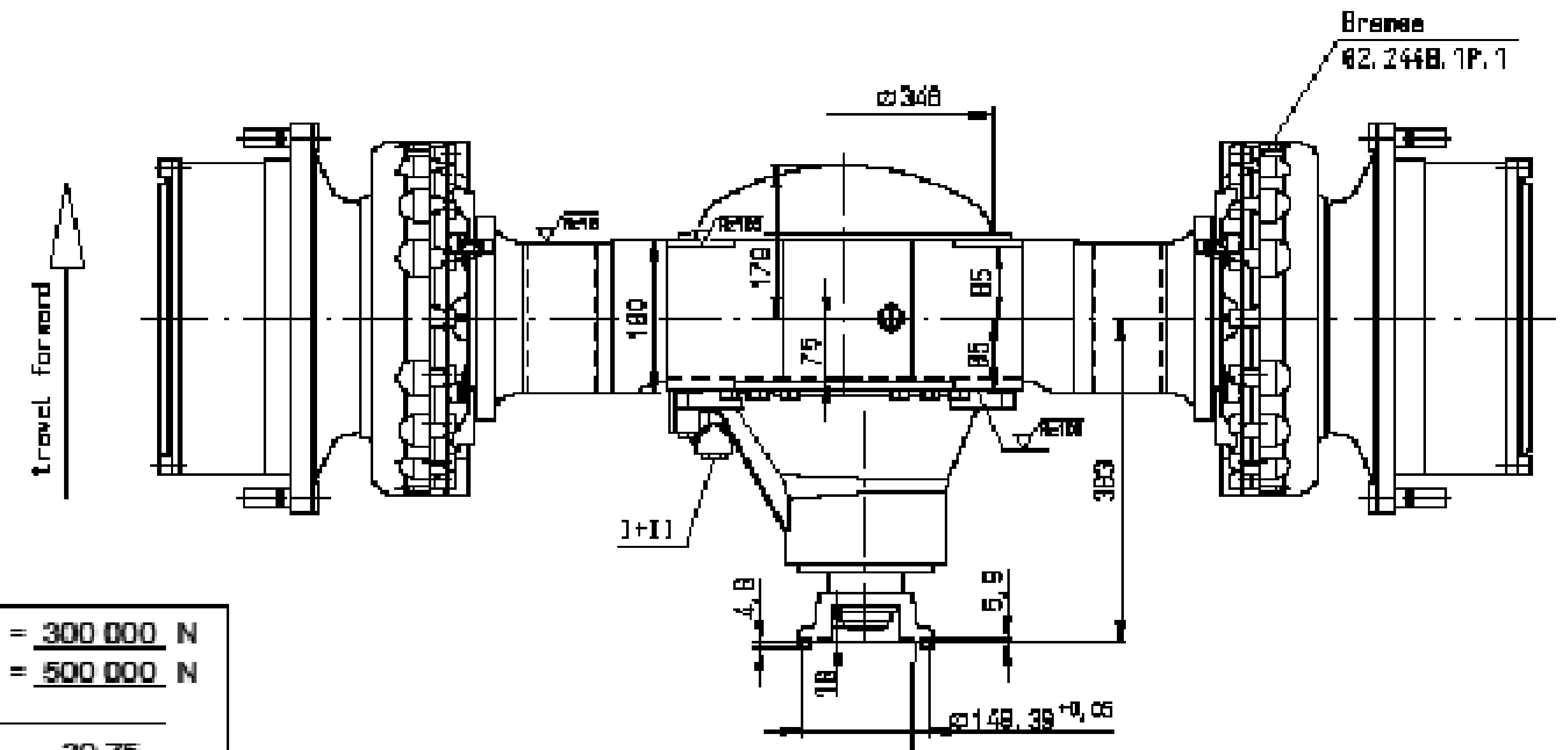
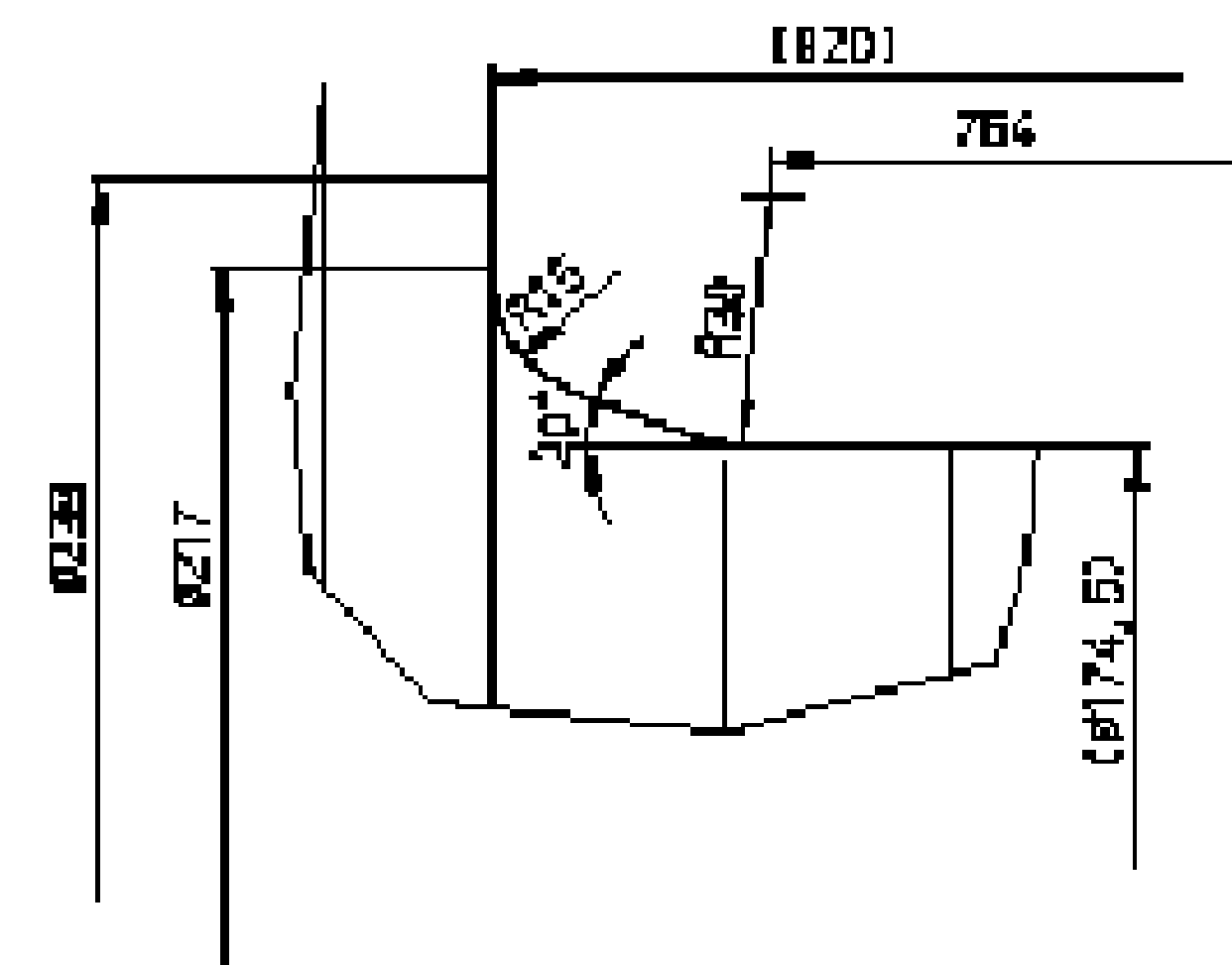


A 1:1



12 wheel bolts M22x1,5
wheel nuts with flat washer

Z 1:2



axle with wet disc brake
for external cooling

axle with wet disc brake
without external cooling
see 82.10397

Inlet 7C
flange 51.3167.3
4x1/2" - 20 UNF2B

Load at $v = 15 \text{ km/h}$ = 300 000 N
 Axle Load = 500 000 N

$(j_v = \dots j_n = 5,13 j_n = 6,0) = 30,75$

wet disc brake NLB3340 for external cooling
 char. data sheet WN83270 / WN85801 / WN85802

Braking Torque per Hub End at max. line pressure 02bar = 17 500 Nm
 mineral oil Lining -
 Braking Torque = - Nm

S-Ø711	-	-	-
-	-	-	-
40	-	-	-

*) not included in scope of supply

Radmuttern lose mitgeliefert
 wheel nuts shipped separately

	Scale:	1:10
	Date	Name
	Design	24.05.2019
Check		Bi

Description:
 Drive Axle D81PL489-NLB