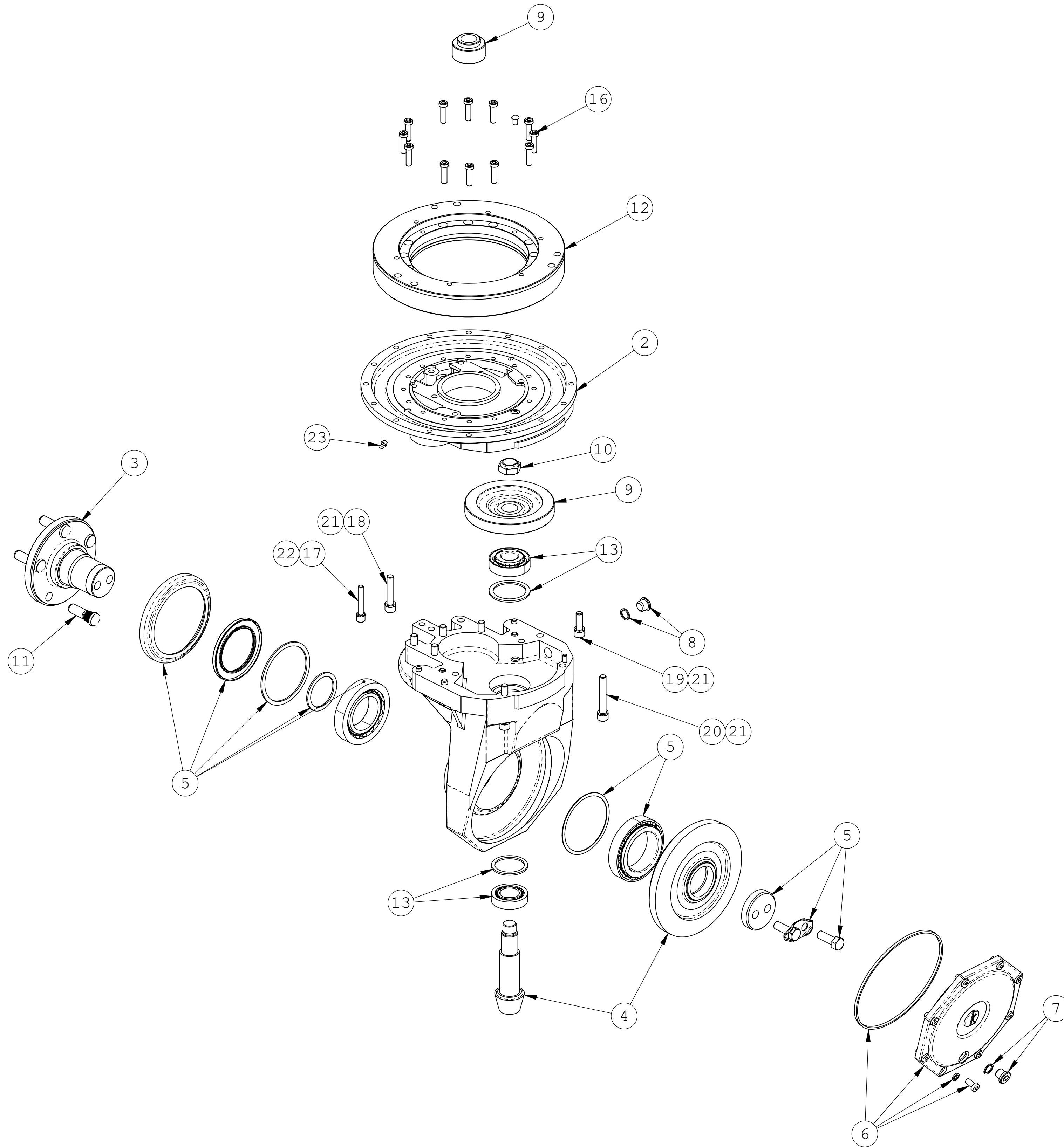


ITEM NO.	QTY.	PART NO.	DESCRIPTION
1	1	15001631	GEARBOX HOUSING
2	1	15001637	TOP GEARBOX COVER
3	1	15001655	AXLE SHAFT
4	1	15001671	SPIRAL BEVEL GEAR SET
5	1	150016E7	LOWER GEARBOX REBUILD KIT
6	1	150016E8	LOWER GEARBOX COVER KIT
7	1	150016E9	DRAIN PLUG KIT
8	1	150016F1	FILL PLUG KIT
9	1	15001721	SPUR GEAR REBUILD KIT
10	1	150016A5	HEX NUT
11	5	150016A6	WHEEL BOLT
12	1	150016C9	STEERING BEARING
13	1	15001722	BEARING REBUILD KIT
14	1	15001657	O-RING
15	1	150016A1	DOWEL PIN
16	14	H1880	SHCS M8 X 30MM
17	3	H1874	SHCS M8 X 50MM
18	5	H273	SHCS M10 X 50MM
19	2	H1876	SHCS M10 X 30MM
20	2	H1878	SHCS M10 X 65MM
21	9	H1886	10MM LOCKWASHER
22	5	H1885	8MM LOCKWASHER
23	2	15001694	GREASE ZERK



PART NO. 15001603

This drawing contains proprietary information. This drawing or any part of it shall not be reproduced in any manner except as authorized in writing.		RICO TRANSMISSION	
TOLERANCES DECIMAL .1" ±.01" .XX ±.04" .XXX ±.010"	DRAWN BY AAS	SCALE 1:4	SHEET NO. 1
SIZE: D ANGULAR ±1°	DATE 08/24/2020	PART NO. 15001603	SHEET 1 OF 1