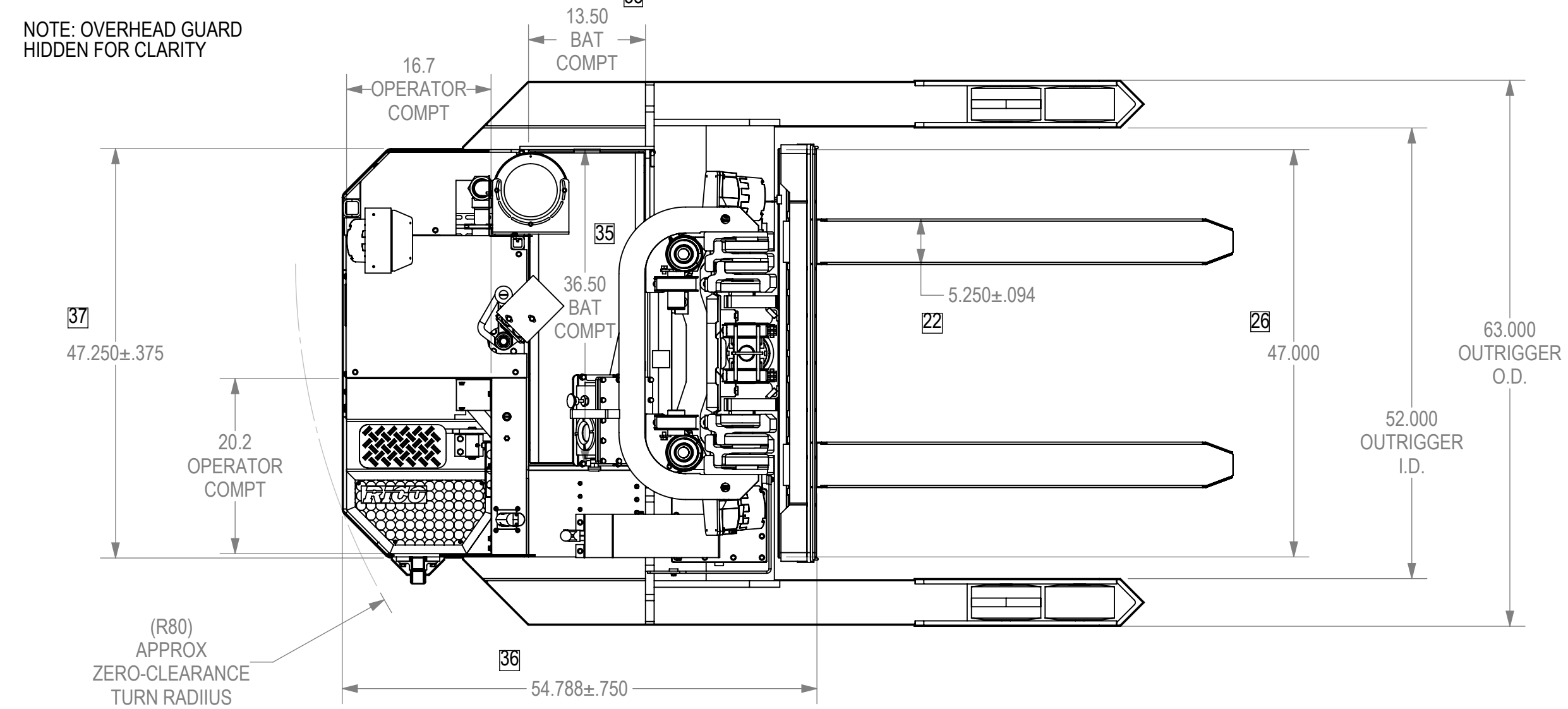


ZONE		REV	ECN	REVISIONS		
		A		DESCRIPTION	DATE	APPROVED
				INITIAL RELEASE.	5/20/2019	SLS



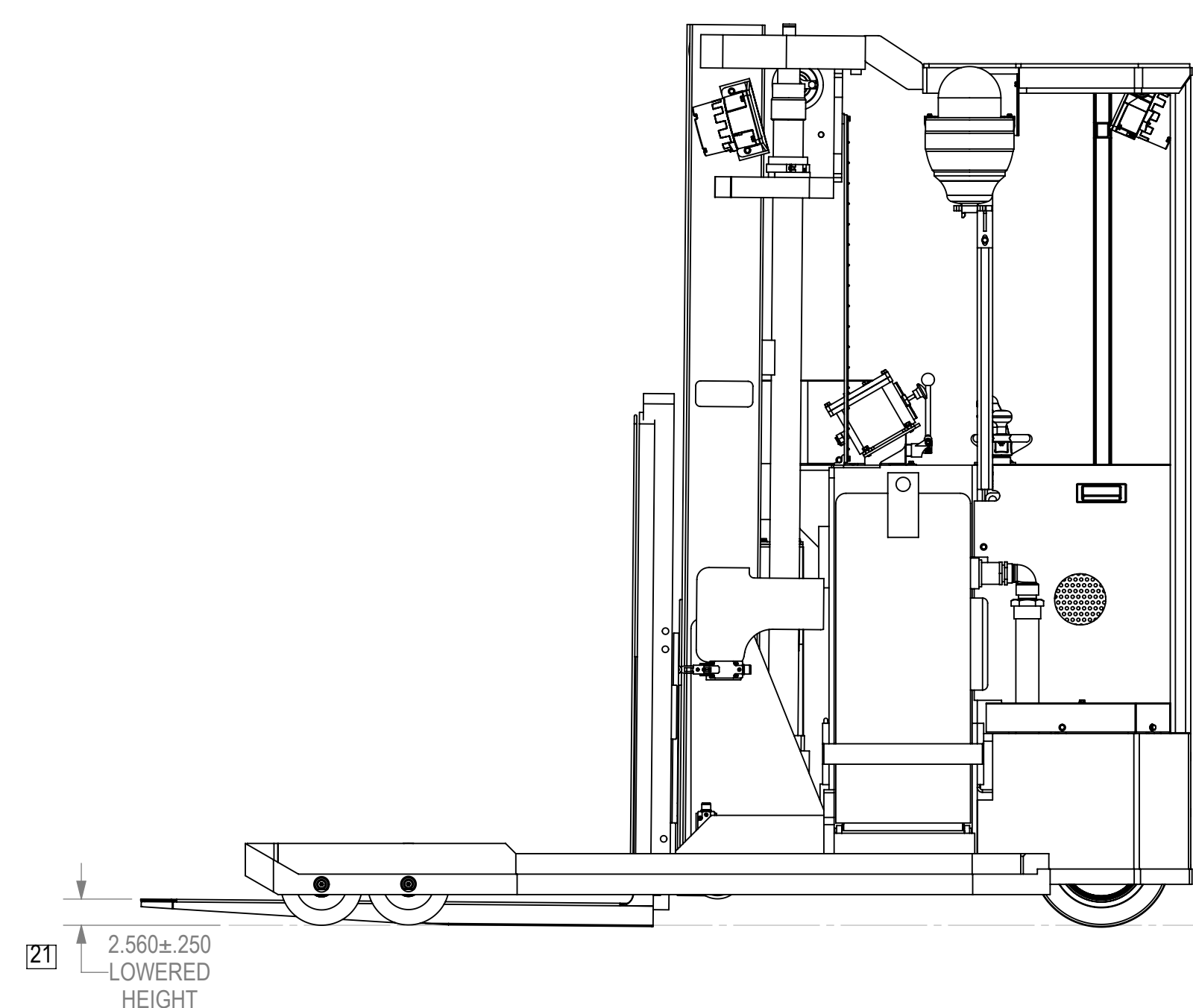
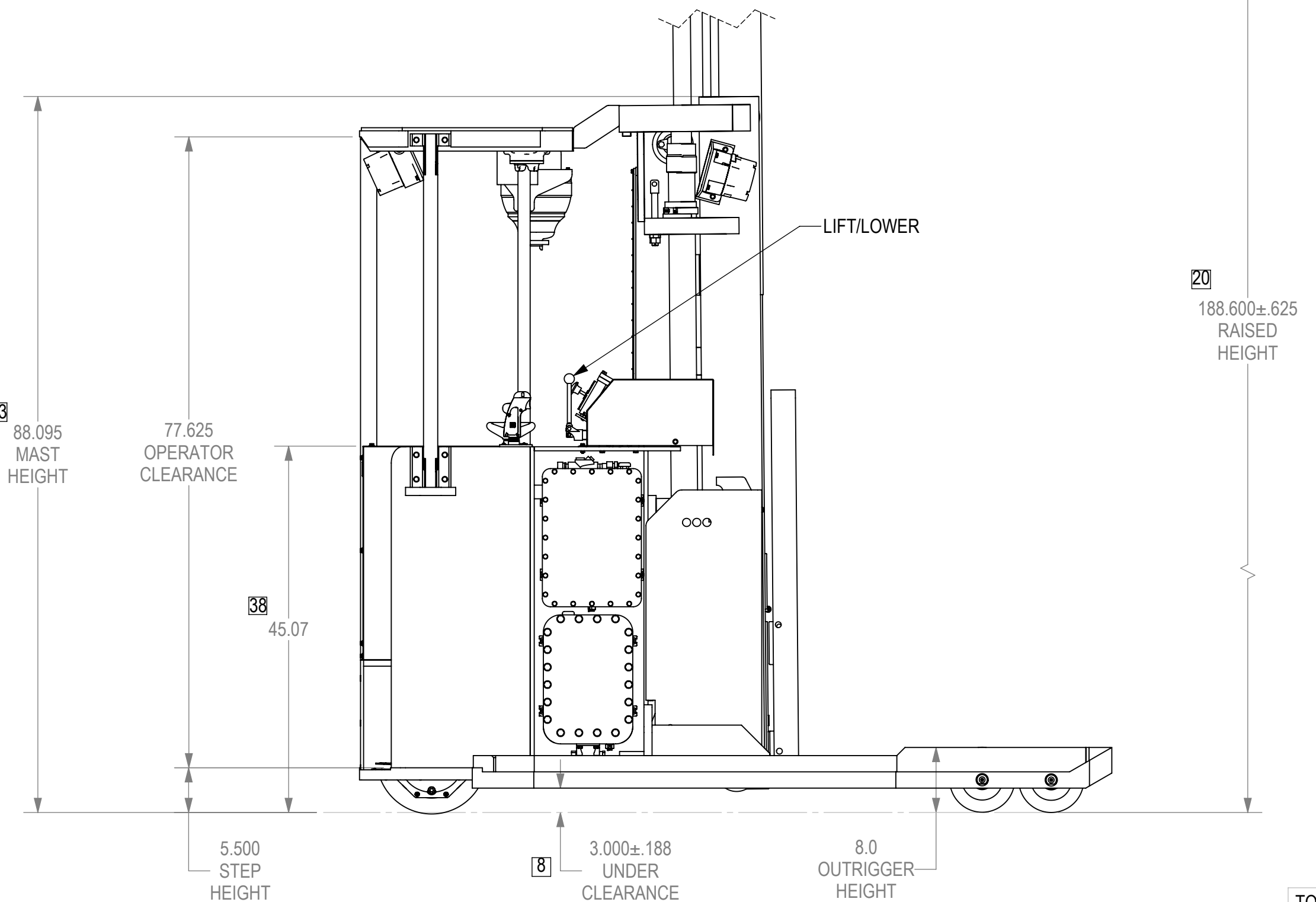
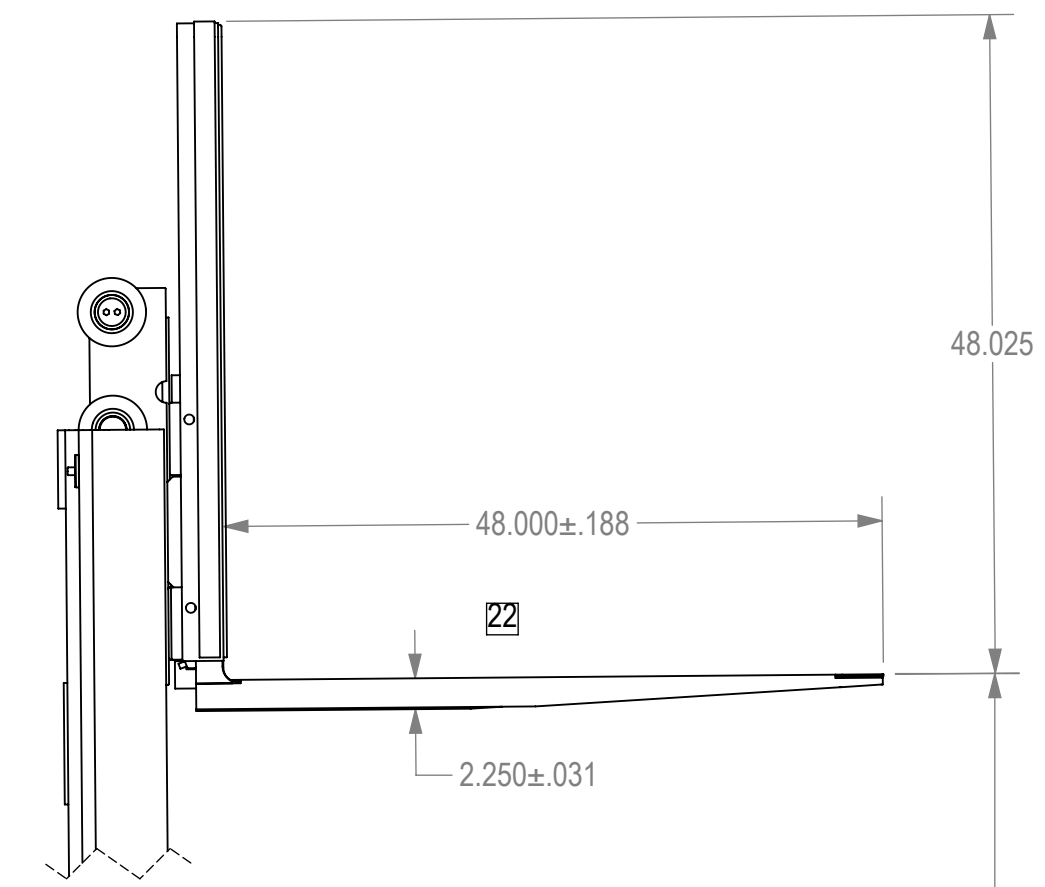
**DRAWING SUBMITTAL REVIEW**

APPROVED                       APPROVED WITH NOTED CHANGES

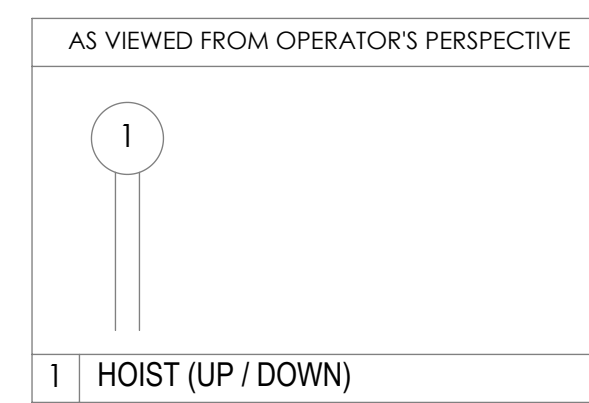
REVISE AND RESUBMIT         REJECTED

BY: \_\_\_\_\_ DATE: \_\_\_\_\_

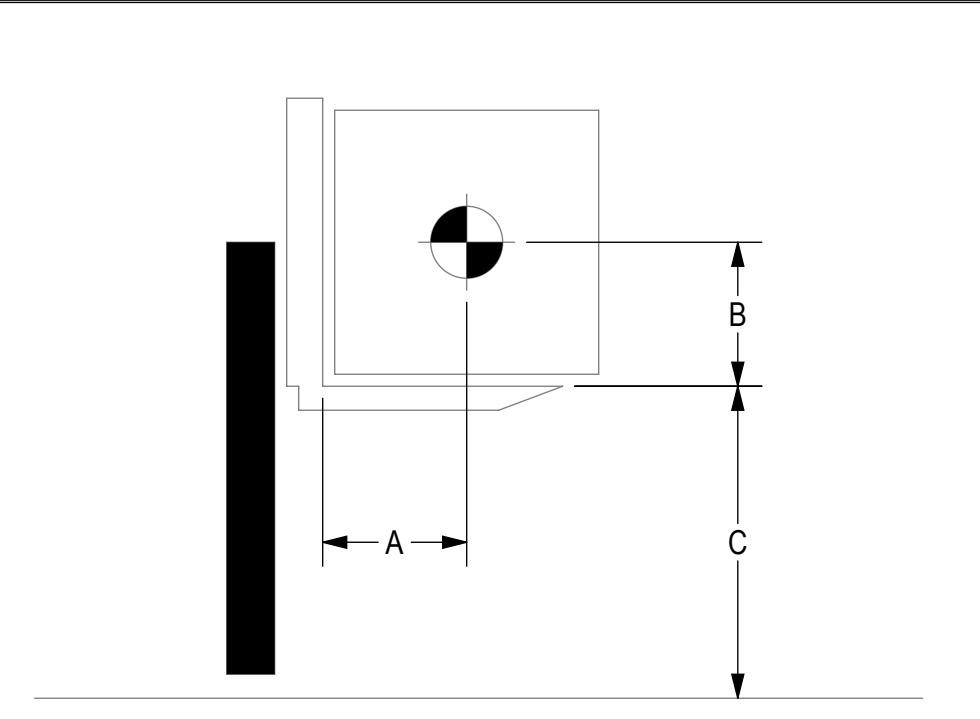
TRUCK SPECIFICATIONS - E-31352		
1	MODEL	HLR-EX-AC-60
2	RATING	BUILT TO U/L 583 TYPE "EX"
3	CAPACITY	6,000 LBS
4	LOAD CENTER	24"
5	DRIVE END TYPE	RIDER
6	DRIVE QTY	SINGLE HELICAL
7	RIDER ENTRY	REAR
8	UNDER-CLEARANCE	SEE DRAWING
9	DRIVE TIRE	POLYTREAD XL
10	STEERING	POWER
11	HANDLE TYPE	STANDARD
12	BRAKES	HEAVY-DUTY MECHANICAL DISK BRAKE SYSTEM
13	HYDRAULIC CONTROLS	MANUAL SPOOL VALVE FOR INFINITELY VARIABLE OPERATION
14	TRAVEL SPEED (EMPTY)	4.5 MPH
15	PAINT	SAFETY ORANGE
16	SPEED CUT-BACK	NO
17	FORK TYPE	STANDARD
18	FORK CLASS	ITA III
19	FORK LOCATION	ADJUSTABLE
20	FORK RAISED HEIGHT	SEE DRAWING
21	FORK LOWERED HEIGHT	SEE DRAWING
22	FORK DIMENSIONS	SEE DRAWING
23	OVERALL MAST HEIGHT	SEE DRAWING
24	FREE LIFT	FULL (67.5)
25	MAST GUARD	WIRE MESH
26	CARRIAGE WIDTH	47"
27	TILT (FORWARD / BACK)	N/A
28	LOAD BACK REST	STANDARD
29	SIDE SHIFT	NO
30	SIDE SHIFT AMOUNT	N/A
31	BATTERY SUPPLIER	SEE BATTERY AND CHARGER FORM
32	CHARGER SUPPLIER	SEE BATTERY AND CHARGER FORM
33	BATTERY REMOVAL	LEFT SIDE
34	BATTERY ROLLERS	YES
35	BATTERY COMPARTMENT SIZE	SEE DRAWING
36	CHASSIS LENGTH	SEE DRAWING
37	CHASSIS WIDTH	SEE DRAWING
38	CHASSIS HEIGHT	SEE DRAWING
39	ZERO CLEARANCE TURNING RADIUS	SEE DRAWING
40	SAFETY FEATURES	DEAD-MAN BRAKING
41		EMERGENCY POWER DISCONNECT
42		OVERHEAD GUARD
43		BACKUP ALARM
44		STROBE LIGHT
45		HORN
46		KEY SWITCH
47		HOUR METER / BDI W/ LIFT CUT-OUT
48		



NOTE:  
1. UNLESS OTHERWISE SPECIFIED, ALL DIMENSIONS ARE GIVEN WITH BRASS.  
2. BRASS IS TYPICALLY 1/8" THICK.



SERIAL NUMBER:	E-31352				
TRUCK MODEL:	HLR-EX-AC-60				
TYPE DESIGNATION:	EX				
CALCULATED TRUCK WEIGHT WITH BATTERY:	9,050	LBS			
TRUCK VOLTAGE:	24	VOLTS			
BATTERY WEIGHT:	MIN	1,300 LBS			
	MAX	1,600 LBS			
ATTACHMENT(S)	CAPACITY	A	B	C	
	(LBS)	(IN)	(IN)	(IN)	
	NONE	6,000	24	24	156
	NONE	5,200	24	24	188



**TOLERANCES:**

.X	± 3"
.XX	± .13"
.XXX	± .063"
ANGULAR WEIGHTS	± 1° ± 15%

**WELD SPECS:**

- AWS D14.1

**UNLESS OTHERWISE SPECIFIED:**

- DIMENSIONS ARE IN INCHES.
- INTERPRET DIMENSIONS AND TOLERANCES PER ASME Y14.5-2009.
- INTERPRET WELD SYMBOLS PER AWS A2.4-2007.

**CONFIDENTIAL AND PROPRIETARY:**  
THIS DRAWING SHALL NOT BE DISCLOSED OR DUPLICATED WITHOUT THE EXPRESS WRITTEN CONSENT OF BPR-RICO MANUFACTURING, INC.

**RICO**  
BPR-RICO MANUFACTURING, INC.  
691 WEST LIBERTY ST., MEDINA, OH 44256

ENGINEER: STEVE SIRON  
DRAWN BY: STEVE SIRON  
DATE: 5/17/2019  
THIRD PARTY APPROVAL: NA

TITLE: PRELIMINARY DRAWING  
DWG NO: 931352PD  
ALTERNATE:  
STATUS: ACTIVE  
PROCESS: INSPECT  
SOURCE: MANUFACTURE

CAGE: 02M56  
SCALE: D  
UNIT OF MEASURE: EA  
WEIGHT (LB): 9439.77  
REV: A  
SHEET: 1 OF 1

THIRD ANGLE PROJECTION

MATL QTY: \_\_\_\_\_  
MATL NO: \_\_\_\_\_  
MATL DESC: \_\_\_\_\_